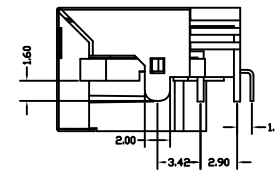
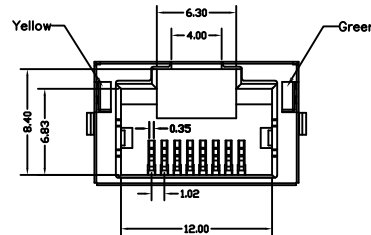
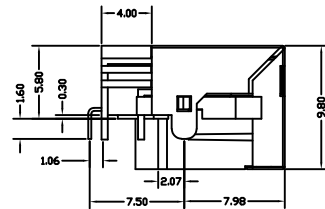
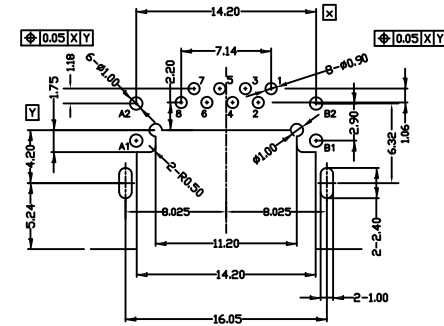
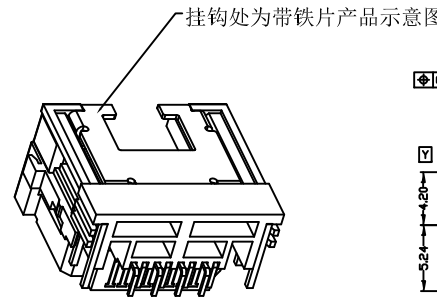
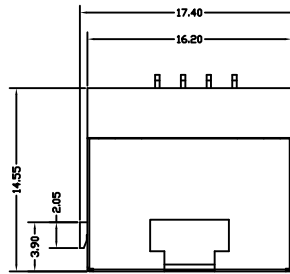


RoHS compliant

Notes:

- 1.Materials:
Housing:Thermoplastic,UL94V-0,Color is black.
Terminal:Phosphor Bronze.
Shell:Stainless
- 2.Plating:
Terminal:Gold flash on contact area.
Matte tin 80u" on solder tails.
Nickel 50u" underplated over all.
- Shell:Nickel 50u" plated over all.
- 3.LED plated:
DIP solder plating:Matte tin 100u" on all.
- 4.Mylar:Clear polyester.

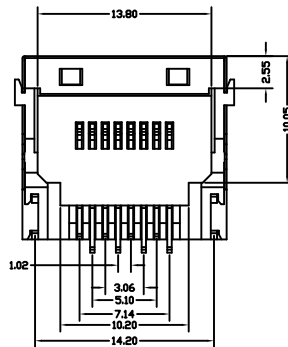


Recommend PCB

Layout

Tolerance:±0.05mm (Top view)

- 1.Recommended PCB layout thickness:1.20±0.05
- 2.Processing temperature should not exceed 260 centigrade



P/N:RJ58D-8811-11X4X2X

GOLD PLATING
1-Gold Flash
2-1u
3-1.5u
4-3u
5-6u

COLOR
1-BLACK
2-WHITE
3-RED
4-YELLOW

TAPE REEL
R-TAPE REEL
P-PVC TRAY

				GENERAL TOLERANCE		DRAWN	Gene Li	2016-03-12	UNIT	MM	X-SHUN 东莞市祥舜电子科技有限公司 DONGGUAN X-SHUN ELECTRONIC TECHNOLOGY CO., LTD TEL:+86 769 81885389 FAX:+86 769 81887859 E-Mail:sales@x-shun.com Http:www.x-shun.com	
				.X ±0.35	X.° ± 2°	CHECKE	KB		SCALE	1:1		
A0		NEW DESIGN	2016/03/12	.XX ±0.25	X.° ± 1°	APPROVE			SHEET		PART NO.	RJ58D-8811-11X4X2X
REV	ECN NO	DESCRIPTION	DATE	SIGNATURE	.XXX ±0.15	.XX° ± 0.5°			REV	A0	TITLE	RJ45 90° DIP SINK H=5.8mm W/LED Y/G
				PROJECT		DRAWING NO				REV		