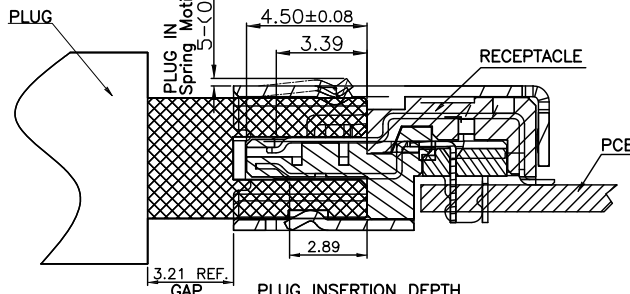
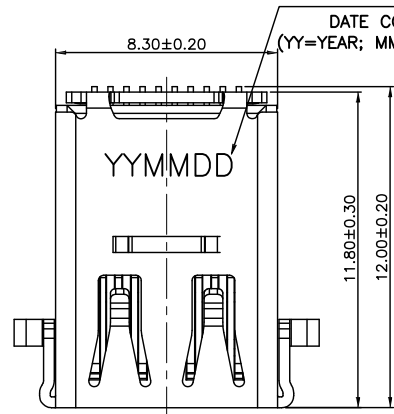


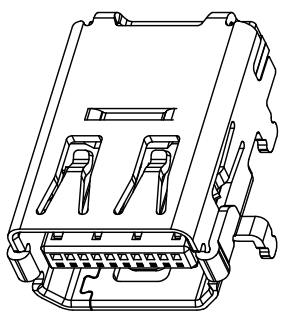
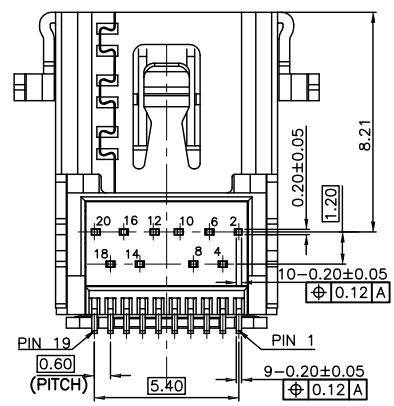
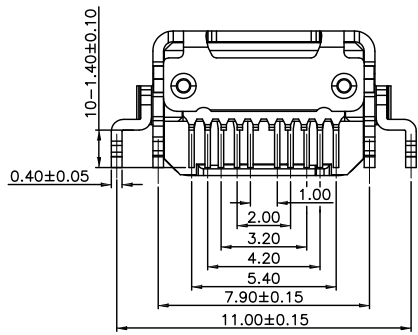
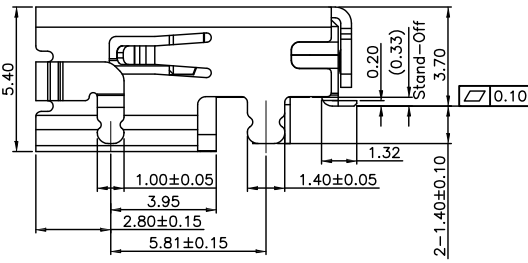
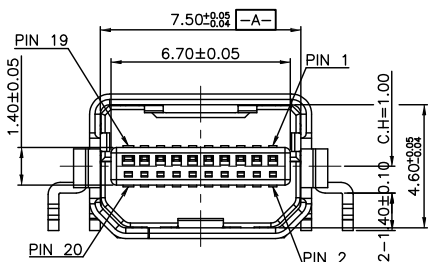
RoHS compliant

F
E
D
C
B
A

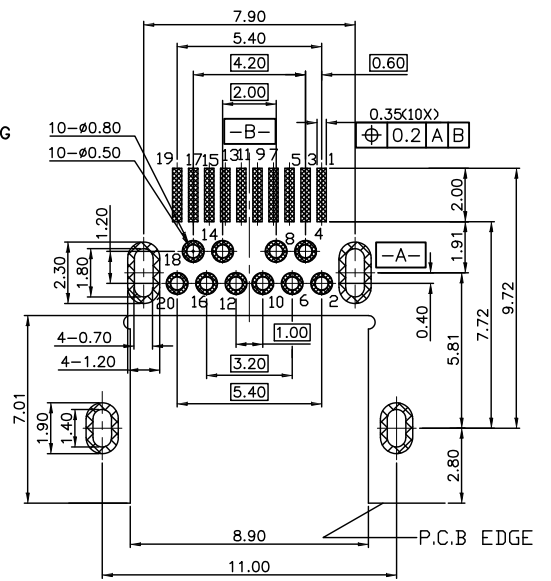
F
E
D
C
B
A



NOTES:
 1. MATERIAL:
 1.1 SHELL: SUS304-1/2H
 1.2 HOUSING: LCP E130I UL94V-0 BLACK
 1.3 TERMINAL: C2680-H
 2. PLATING:
 2.1 TERMINAL: 15u" GOLD PLATING ON CONTACT AREA, 60~150u" MATTE TIN PLATING ON SOLDER AREA, 40~100u" NICKEL PLATING UNDERPLATING OVER ALL;
 2.2 SHELL: NICKEL PLATED 50u" MIN.



3D VIEW



RECOMMENDED PCB LAYOUT(TOP VIEW)
(TOLERANCE=±0.05mm)

PIN	SIGNAL TYPE	PIN NAME
1	GND	GND
3	Out	ML_Lane 0(p)
5	Out	ML_Lane 0 (n)
7	GND	GND
9	Out	ML_Lane 1 (p)
11	Out	ML_Lane 1 (n)
13	GND	GND
15	Out	ML_Lane 2 (p)
17	Out	ML_Lane 2 (n)
19	GND	GND
2	IN	Hot Plug Detect
4	CFG	CONFIG 1
6	CFG	CONFIG 2
8	GND	GND
10	Out	ML_Lane 3(p)
12	Out	ML_Lane 3(n)
14	GND	GND
16	I/O	AUX_CH(p)
18	I/O	AUX_CH(n)
20	PWR Out	DP_PWR

REV	ECN NO	DESCRIPTION	DATE	SIGNATURE	PROJECT	UNIT	mm	SCALE	1:1	SHEET
A0		NEW DESIGN	2018/09/12							

GENERAL TOLERANCE		DRAWN	2018/09/12	
.X	±0.35	X.°	± 2°	
.XX	±0.25	X.°	± 1°	
.XXX	±0.15	.XX°	± 0.5°	

X-SHUN 东莞市祥舜电子科技有限公司
 DONGGUAN X-SHUN ELECTRONIC TECHNOLOGY CO., LTD

PART NO. MIDP-2015L1PH4
 TITLE: MINI DP 20P 母座 沉板式DIP+SMT 板上3.70MM CH=1.0MM

REV A0 DRAWING NO. DP-12