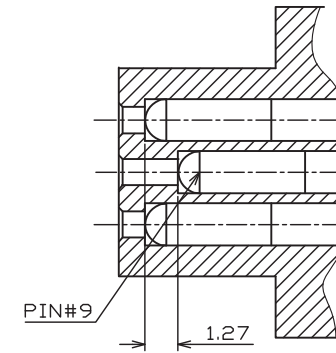
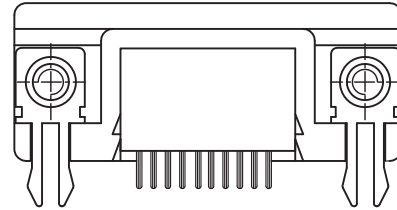
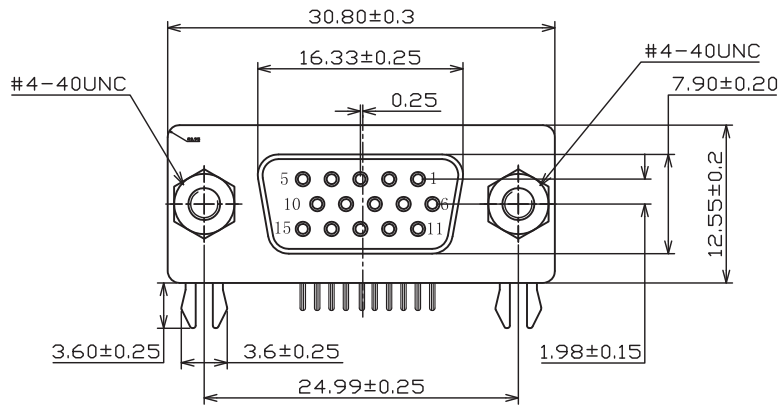
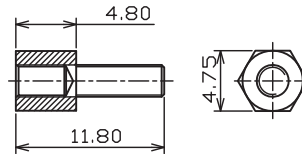
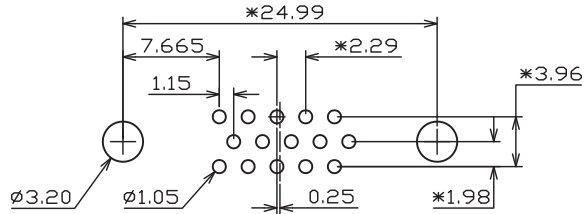
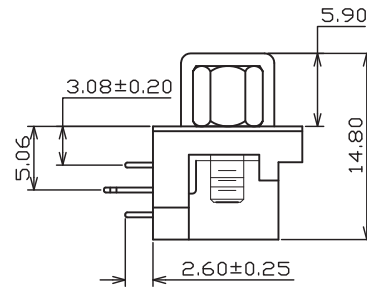
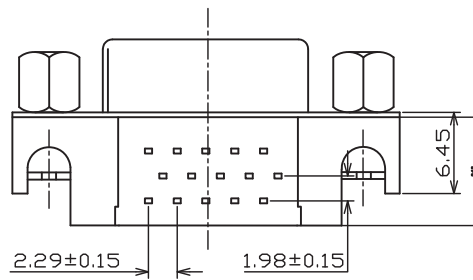


RoHS compliant



A-A  
2:1



螺丝

RECOMMENDED PCB LAYOUT THICKNESS=1.6mm

TOLERANCE:±0.05

SPECIFICATIONS

- 1.1 Voltage: 250 VAC(RMS) Max.
- 1.2 Current Rating: 3 Ampere per Contact
- 1.3 Contact Resistance: 25 Milliohms Max.
- 1.4 Insulation Resistance: 5000 Megohms Min.
- 1.5 Dielectric Withstanding Voltage: 1000 VAC(RMS)
- 1.6 Total Mating Force: 6.0 Kgf Max.
- 1.7 Total Unmating Force: 1.2 Kgf Min.
- 1.8 Operating Temperature: -55° C to +85° C

| ITEM | PART NAME | QTY. | MATERIAL   | REMARKS    |
|------|-----------|------|------------|------------|
| ⑥    | SCREW     | 2    | SPCC       | Ni         |
| ⑤    | COVER     | 1    | PBT+30%G/F | BLUE(661C) |
| ④    | FISH FORK | 2    | SPCC       | Tin        |
| ③    | SHELL     | 1    | SPCC       | Ni         |
| ②    | CONTACT   | 15   | BRASS      | Tin        |
| ①    | INSULATOR | 1    | PBT+30%G/F | BLUE(661C) |

| REV | ECN NO | DESCRIPTION | DATE       | SIGNATURE | PROJECT           | UNIT    | mm | SCALE   | 1:1 | SHEET      | REV | A0  | DRAWING NO. | XSR3CB1-OS |
|-----|--------|-------------|------------|-----------|-------------------|---------|----|---------|-----|------------|-----|---|-------------|------------|
| A0  |        | NEW DESIGN  | 2018/03/11 |           |                   |         |    |         |     |            |     |   |             |            |
|     |        |             |            |           | GENERAL TOLERANCE | DRAWN   |    | Gene Li |     | 2018/03/11 |     | <b>X-SHUN</b> 东莞市祥舜电子科技有限公司<br>DONGGUAN X-SHUN ELECTRONIC TECHNOLOGY CO., LTD |             |            |
|     |        |             |            |           | .X ±0.35          | CHECKER |    | QH      |     |            |     | PART NO. XSR3CB1-OSPLIP   |             |            |
|     |        |             |            |           | .XX ±0.25         | APPROVE |    |         |     |            |     | TITLE: HDR3.08 15PIN 母座 卧式DIP 叉锁4.8螺丝 黑/蓝胶                                    |             |            |
|     |        |             |            |           | .XXX ±0.15        |         |    |         |     |            |     |   |             |            |