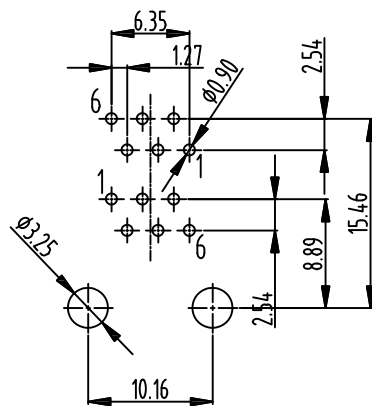
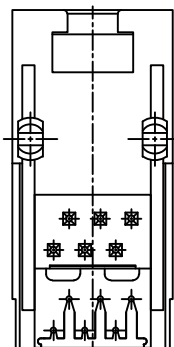
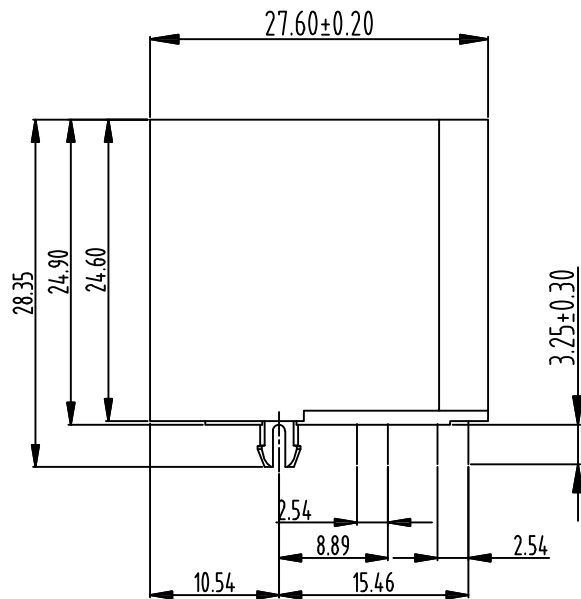
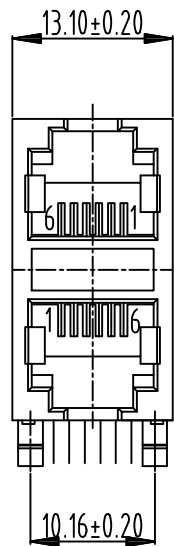


RoHS compliant



PCB LAYOUT/TOP VIEW

NOTES

MATERIAL

- 1. HOUSING MATERIAL : GLASS FILLED POLYESTER UL94V-0.
- 2. CONTACT MATERIAL : PHOSPHOR BRONZE $\phi 0.46$ mm.
- 3. PLATING : GOLD PLATING OVER NICKEL.
: FU", 3U", 6U", 15U", 30", 50".
- 4. SHIELD : 0.20mm THICKNESS COPPER ALLOY WITH NICKEL PLATED.

ELECTRICAL

- 1. VOLTAGE RATING : 125 VAC RMS.
- 2. CURRENT RATING : 1.5 AMP.
- 3. CONTACT RESISTANCE : 30 MILLIOHMS MAX.
- 4. INSULATION RESISTANCE : 500 MEGOHMS MIN @ 500V DC .
- 5. DIELECTRIC DIELECTRIC RESISTANCE : 1000V AC RMS 50Hz. 1MIN.

MECHANICAL

- 1. DURRABILITY : 750 CYCLES MIN.
- 2. PCB RETENTIONPRE-SOLDER : 1 LB MIN.

ENVIRONMENTAL:

- 1. STORAGE : -40°C ~ +85°C.
- 2. OPERATION : 0° C TO 70° C.

				GENERAL TOLERANCE		DRAWN	Gene Li		2017/12/08		东莞市祥舜电子科技有限公司 DONGGUAN X-SHUN ELECTRONIC TECHNOLOGY CO., LTD			
				.X	±0.35	X.°	± 2°	CHECKE	HY				PART NO.	RJ59B-6621-000111R
				.XX	±0.25	.X.°	± 1°	APPROVE			TITLE:	5921 2X1 6P6C		
				.XXX	±0.15	.XX.°	± 0.5°	PROJECT				REV	A0	
REV	ECN NO	DESCRIPTION	DATE	SIGNATURE	PROJECT		UNIT		mm	SCALE	1:1	SHEET	3/3	
				PROJECT		UNIT		mm	SCALE	1:1	SHEET	3/3	DRAWING NO.	RJ59B-62